

Using the topic wordlists and symbols from download resources in Communicate: In Print 2

It is assumed that you have version 2 of Communicate: In Print, with the coloured Widgit rebus Symbols. If not, you will need to upgrade.

Each of the download resources comes with any additional graphics that are not available in the release version of the Communicate: In Print 2 and an additional wordlist that has the words that link to these graphics.

When you install the In Print download the graphic files are automatically installed into the Widresources and Widgit Pictures folders and the additional wordlist e.g. romans.cwl is installed into the wordlist folder inside Communicate Files.

1. To use the symbols in your own materials

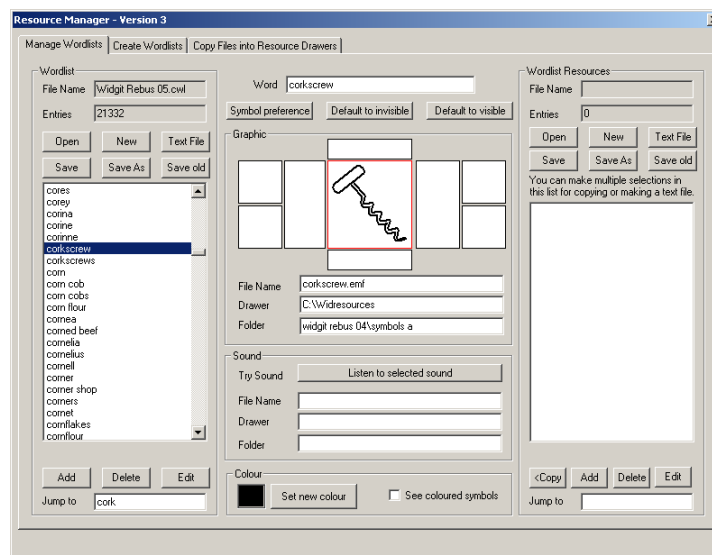
When you launch Communicate: In print your default wordlist will be loaded into memory. Add the small additional wordlist by going to the **Wordlist** menu and selecting Merge. When you save the document it will remember that you were using two wordlists and will reopen both lists when you next open that file.

2. To add these words to your default wordlist



You can merge the new short list(s) with your main wordlist in the Resource Manger. If you do not have a shortcut on your desktop to the Resource Manager V3, open it from the Start/Programs listed under Widgit.

Open the Resource Manager and click on Open at the top of the left column. Select your main wordlist. When list of words will appear in the left column. When you click on any entry in the list you will see the graphic that it is linked to.



To add another wordlist to this one, click on the Open button again and select the additional wordlist. You will see the message: Do you want to merge with the wordlist already loaded? Answer Yes. When you have added all the subsidiary wordlists you want, click on Save As and give the file a new name or over-copy our default list.